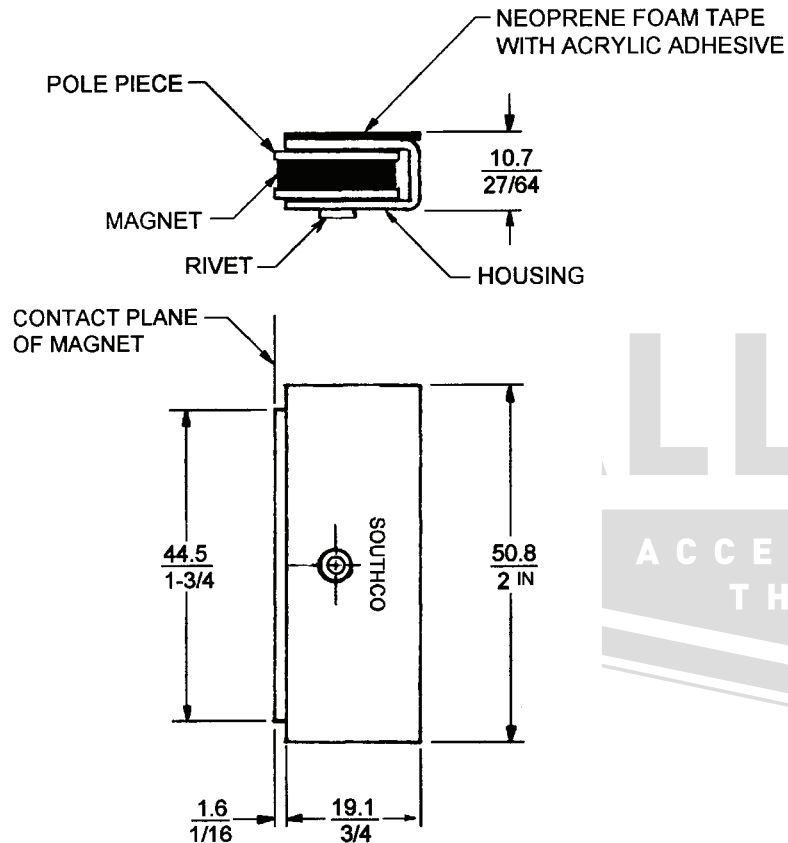


APPROVAL - CUSTOMER NAME & SIGNATURE

DATE



TO INSTALL REMOVE PROTECTIVE PAPER AND APPLY ASSEMBLY TO A CLEAN , DRY SURFACE

NOTES: MAGNETIC CATCHES IN GENERAL AND ADHESIVE MOUNTING ASSEMBLIES IN PARTICULAR ARE DESIGNED TO FUNCTION UNDER INTERMITTENT BREAK AWAY LOADS. DO NOT SUBJECT ADHESIVE MOUNTING ASSEMBLIES TO A CONTINUOUS LOAD.

DOOR AND FRAME SHOULD HAVE A BUILT-IN STOP TO PREVENT EXCESSIVE LOADING OF THE ADHESIVE DUE TO SLAMMING OF THE DOOR.

ALLEGIS		1-866-378-7550
MATERIAL:	DRAWING NO. :	
	02-30-221-10	
FINISH:	Natural	
REV.:	DATE:	
1:1	6/10/2019	