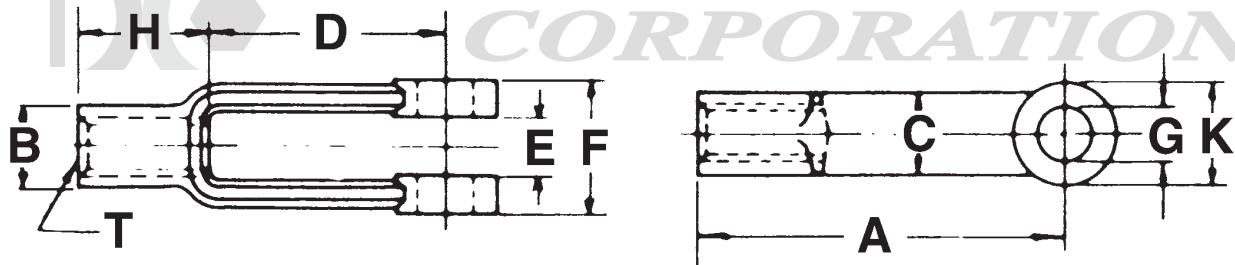


Part Numbers	Overall Length A	B	C	D	E	F	Min. G	Drilled Hole H
<b>2708 1/2-2A</b>	22.86 (.90")	6.35 (.25")	9.52 (.375")	2.38 (.093")	17.06 (.671")	19.44 (.765")	5.30 (.209") / 5.43 (.214")	1.85 (.073") / 2.23 (.088")
<b>2708 1/2-3A</b>	26.16 (1.03")	7.93 (.312")	11.11 (.437")	2.38 (.093")	20.63 (.812")	23.81 (.937")	6.57 (.259") / 6.73 (.265")	2.64 (.104") / 3.02 (.119")
<b>2708 1/2-4A</b>	30.22 (1.19")	9.52 (.375")	12.7 (.50")	3.25 (.128")	23.81 (.937")	26.97 (1.062")	7.92 (.312") / 8.30 (.327")	2.64 (.104") / 3.02 (.119")
<b>2708 1/2-5A</b>	34.03 (1.34")	11.11 (.437")	14.28 (.562")	3.89 (.153")	26.97 (1.062")	30.14 (1.187")	9.75 (.384") / 9.90 (.390")	2.64 (.104") / 3.02 (.119")
<b>2708 1/2-6A</b>	38.60 (1.52")	12.7 (.50")	15.87 (.625")	4.06 (.160")	30.55 (1.203")	34.51 (1.359")	10.94 (.431") / 11.15 (.439")	3.45 (.136") / 3.83 (.151")
<b>2708 1/2-6C</b>	54.35 (2.14")	12.7 (.50")	15.87 (.625")	3.99 (.157")	44.83 (1.765")	50.39 (1.984")	10.94 (.431") / 11.15 (.439")	3.45 (.136") / 3.83 (.151")
<b>2708 1/2-7A</b>	45.97 (1.81")	15.87 (.625")	20.63 (.812")	5.15 (.203")	36.90 (1.453")	40.86 (1.609")	14.12 (.556") / 14.32 (.564")	3.45 (.136") / 3.83 (.151")
<b>2708 1/2-8A</b>	54.86 (2.16")	19.05 (.75")	23.81 (.937")	6.35 (.25")	43.63 (1.718")	48.41 (1.906")	16.96 (.668") / 17.22 (.678")	4.24 (.167") / 4.62 (.182")



<b>www.ALLEGISCORP.com</b>		MATERIAL : ZINC	
<b>1-866-378-7550</b>			
REV. : 1 : 1	DATE : 1-10-2013	DESCRIPTION : Yoke Pin	PART NUMBER : 2708 1/2 series