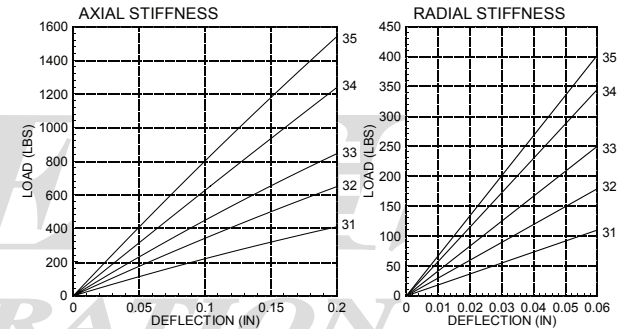
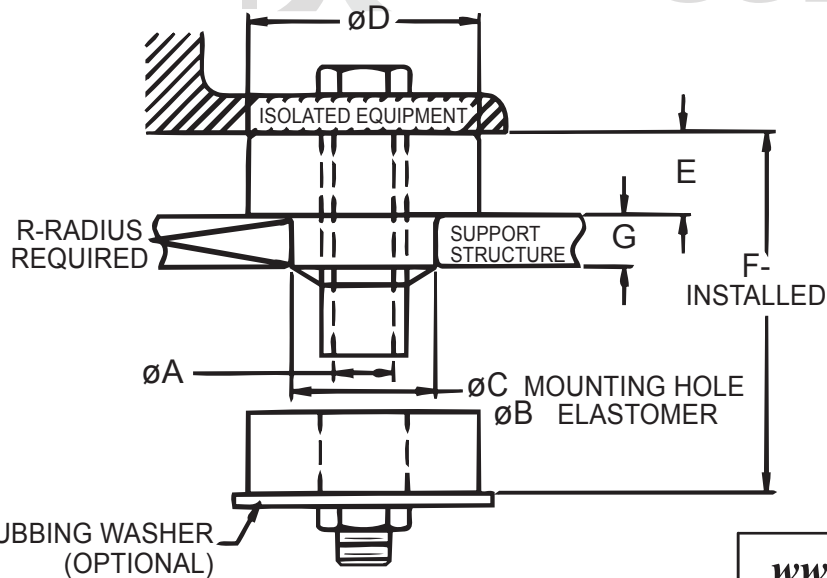


Part No.	A	B	C	D	E	F	G		R
							Thin Support	Thick Support	
60011 thru 15	0.39	0.78	0.75	1.25	0.50	1.25	0.37	N/A	0.03
60021 thru 25	0.53	1.31	1.25	1.87	0.78	1.94	0.50	0.56	0.06
60031 thru 35	0.64	1.55	1.50	2.53	0.90	2.45	0.75	0.88	0.08
60041 thru 45	0.94	2.30	2.25	3.50	1.00	2.88	1.00	1.12	0.12
60051 thru 55	1.06	2.55	2.50	4.88	1.25	3.38	1.00	1.25	0.12

60031 thru 35 Series



Curves are for recommended THICK support.
Consult Tech Products for thin support information



Static Load Rating (lbs.)

Part No.	Color Code	Thin Support	
		Axial	Radial
60031	Yellow	100	80
60032	Red	180	120
60033	Green	250	175
60034	Blue	350	265
60035	White	500	370

Part No.	Color Code	Thick Support	
		Axial	Radial
60031	Yellow	215	90
60032	Red	360	140
60033	Green	490	225
60034	Blue	860	385
60035	White	1330	690

www.ALLEGISCORP.com

1-866-378-7550

MATERIAL / FINISH :

Standard Neoprene elastomer

REV. :

1 : 1

DATE :

1-10-2013

DESCRIPTION :

Universal Mount

DRAWING NO. :

60031 - 60035