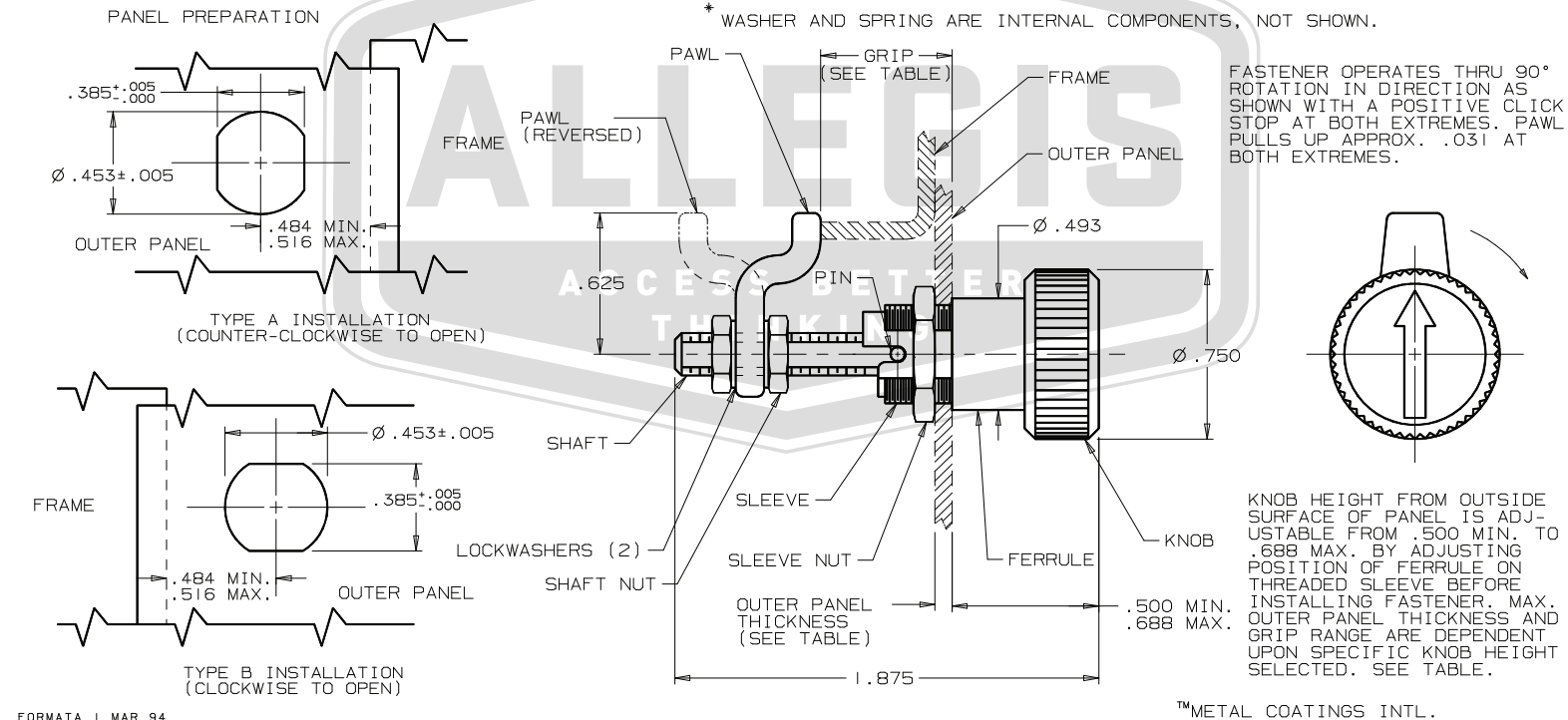


APPROVAL - CUSTOMER NAME & SIGNATURE

DATE

REV.	DATE	BY-CHKD	REVISIONS	ITEM	PART NUMBER	MATERIAL	FINISH
D	09FEB92	JSS	PRN: 68-79	ASSEMBLY	69-10-401-11	—	—
E	04 DEC 97	TCP CHW	PRN: 69-90A	KNOB	—	THERMOPLASTIC	BLACK
F	10MAR99	MJS	PRN: 69-97	SHAFT	—	STEEL	DACROTIZED™
				WASHER*	—	STAINLESS STEEL	PASSIVATE
				SPRING*	—	STAINLESS STEEL	PASSIVATE
				SLEEVE	—	ZINC	NATURAL WITH CHEMICAL PROTECTIVE FILM
				GROOVE PIN	—	STAINLESS STEEL	NATURAL
				FERRULE	—	ALUMINUM	NATURAL
				SLEEVE NUT	—	STEEL	ZINC PLATE PER QQ-Z-325 TY. I CL.3 PLUS CHROMATE DIP - BRIGHT
				SHAFT NUT (2)	—	STEEL	DACROTIZED™
				PAWL	—	STEEL	DACROTIZED™
				LOCKWASHERS (2)	—	STEEL	DACROTIZED™

KNOB HEIGHT	MAX. OUTER PANEL	GRIP RANGE			
		PAWL AS SHOWN		PAWL REVERSED	
		MIN.	MAX.	MIN.	MAX.
.688 MAX.	.063	.125	.625	.625	1.125
.500 MIN.	.250	.313	.813	.813	1.313



ALLEGIS	1-866-378-7550
MATERIAL: Plastic	DRAWING NO. : 69-10-401-11
FINISH:	
REV.: 1:1	DATE: 5/29/2019