

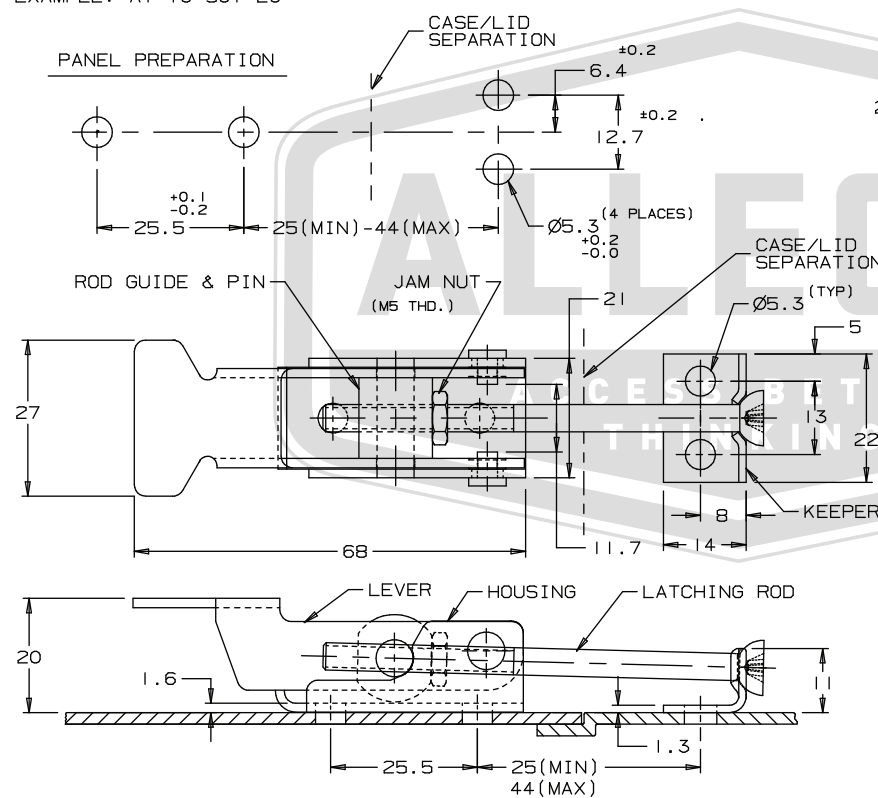
APPROVAL - CUSTOMER NAME & SIGNATURE

DATE

REV.	DATE	BY-CHKD	REVISIONS	ITEM	PART No.	MATERIAL	FINISH
A	15FEB94	JGK	ADDED 11.7mm DIM. BETWEEN ENDS OF RIVETS.	ASSEMBLY	A1-10-501-10		
B	23JULY96	GDM	PRN: A1-132	LATCH		NOTE A	NOTE A
				KEEPER		NOTE A	NOTE A

FOR A LATCH WITH A YELLOW VINYL GRIP ON THE HANDLE END, CHANGE THE EIGHTH DIGIT OF THE PART No. TO 2. EXAMPLE: A1-10-501-20

TO ADJUST FOR LATCHING TENSION OR GASKET COMPRESSION



1. WITH LATCH IN CLOSED POSITION, ADJUST THREADED ROD USING A No. 2 PHILLIPS SCREW DRIVER TO OBTAIN DESIRED LATCHING TENSION OR GASKET COMPRESSION.
2. OPERATE LATCH THROUGH UNLATCHING AND LATCHING SEQUENCE TO INSURE DESIRED ADJUSTMENT.
3. WITH FASTENER OPENED AND LEVER PERPENDICULAR TO ROD, TIGHTEN JAM NUT AGAINST ROD GUIDE, WHILE USING A PHILLIPS SCREWDRIVER TO PREVENT ROD FROM TURNING, TO LOCK ROD IN POSITION.

TO MOUNT LATCH

1. CHOOSE MOUNTING DISTANCE BETWEEN THE LATCH AND THE KEEPER WITHIN THE RANGE SPECIFIED .
2. LOCATE YOUR MOUNTING HOLES IN THE DESIRED LOCATIONS WITH RESPECT TO THE MOUNTING SURFACES.
3. MOUNT LATCH AND KEEPER USING M5 SCREWS OR RIVETS.

MATERIAL and FINISH

NOTE A:

LEVER AND HOUSING, 1010 STEEL. ROD GUIDE, PIN AND JAM NUT, LOW CARBON STEEL. ROD, 1006 STEEL, KEEPER, 1064 STEEL. COMPONENTS ARE ZINC PLATED PLUS BRIGHT CHROMATE DIP. RIVET, 302 STAINLESS STEEL, PASSIVATED.

FORMAT A 3/88

<b>ALLEGIS</b>		1-866-378-7550
MATERIAL: Steel	DRAWING NO. : A1-10-501-20	
FINISH: Zinc Plate, bright chromate		
REV. : 1:1	DATE: 5/29/2019	